

52Z-Meter Truck-Mounted Concrete Boom Pump



- **170 ft Vertical Reach**
- **Unique 5-Section Multi-Z Boom Design**
- **Straight Truck Mounting**
- **High Volume Outputs and High Pressures**
- **Free Flow Hydraulics**

Boom The Putzmeister 52Z-Meter truck-mounted concrete boom pump is the preferred choice within its 170 ft class. This highly versatile 5-section boom with unique Multi-Z boom design unfolds quickly and easily, allowing immediate use – even in congested areas. With the lowest unfolding height of any boom pump in its class, the 52Z-Meter features five shorter boom sections with significantly better articulation for quick job completion – both indoors and out. In addition, central automatic lubrication for boom and pedestal is standard.

Delivery Line The boom is equipped with a 5 in induction hardened delivery line, mounted in easy lift-out brackets for simple delivery line replacement. Standardized elbows and straight pipe sections are used for common component availability and easy replacement.

Pedestal The fully integrated pedestal design of the Putzmeister 52Z absorbs all forces as the outriggers and boom are within one structural element. This design results in less twist, reduced forces transferred to the truck frame, a small outrigger footprint, low overall weight, and quick setup. The boom pedestal includes a rotation bearing and access openings to simplify changing the turret pipe. Triple suction filters with indicator gauges are located in the pedestal for easy access, in addition a condensation trap is found in the tank to collect water. Two spacious 14 ft (4.3m) long decks allow convenient storage of pipe and hoses.

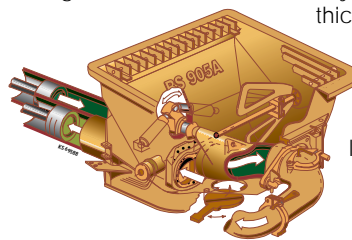
Outriggers All outrigger functions are fully hydraulic with integral cylinders. Front outriggers swing out 45 degrees, telescope and extend down, while the rear outriggers swing out and extend down. This unique design allows for quick set up on confined job sites. For extended on-site use, a diesel fuel tank is built into one of the rear outrigger legs and holds up to 155 gallons (590L). Aluminum outrigger pads (4) in two side compartments are included with each unit.

Radio Remote Controls The pump comes standard with an HBC radio remote control featuring fully proportional boom speed control for smooth and precise positioning of the boom at greater distances. This is an extremely important feature on larger sized models, since at their extreme reach, even a small amount of movement can result in a faster moving boom at the end hose.

Clean Out A 406 psi (28 bar) hydraulically-driven water pump with a 160 gallon (600L) water tank in one of the outrigger legs make clean out easy.

Concrete Pump With the same setup, only Putzmeister has the technology to offer both 260 yd³/hr output and provide 1233 psi concrete pressure with its .20H pump on the piston side (or 210 yd³/hr output and 1233 psi with its .16H pump - rod side). With competitive designs, you have to decide if you want either high pressure or high volume. Key features include a free flow hydraulic system for smooth controllable pumping, as well as, hard-chromed concrete cylinders and automatic lubrication of the concrete pistons for long service life. This pump has a fully adjustable volume control, which allows very slow pumping while retaining full concrete pressure and boom speed.

S-Valve Ideal for high pressure applications, our hard faced S-Valve with gradual 8 in to 7 in (200 to 180mm) reduction is designed to handle extremely harsh concrete mixes. A

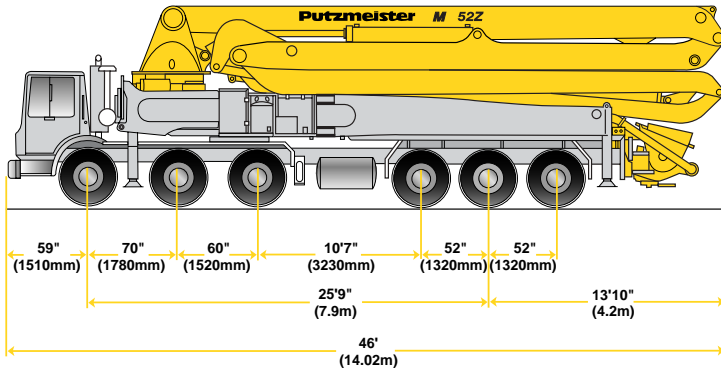


thick-walled valve construction, exclusive Putzmeister hard-chromed concrete cylinders and multi-piece piston cup design provide longer lasting wear overall.

Hopper With a large 19.4 cu ft (550L) capacity, this **EZ Clean Out** RS 905A hopper features a remixer, vibrator, and splash guards as standard. A low 52 in (1310mm) hopper height allows easy discharging from a mixer truck.

Specifications

52Z-Meter Concrete Pump • Truck-Mounted



Truck-Mounted Specifications

Based on Model Mack MR 688S with .16H pump cell.

Length	46'0"	(14.02m)
Width	8' 2"	(2.50m)
Height	12'10"	(3.92m)
Wheelbase	309"	(7850mm)
Front Axle weight	48,700 lbs	(22,090kg)
Rear Axle weight	55,200 lbs	(25,039kg)
Approx total weight	103,900 lbs	(47,129kg)

Weights are approximate and include pump, boom, truck, full hydraulic oil, driver and some fuel. Varies with options selected.

Dimensions will vary with different truck makes, models and specifications.

Boom Specifications • Multi-Z Design

Height & Reach

Vertical reach	169'7"	(51.70m)
Horizontal reach	157'6"	(48.00m)
Reach from front of truck*	147'7"	(44.98m)
Reach depth	124'8"	(38.00m)
Unfolding height	33'2"	(10.10m)

5-Section Boom

1st section articulation	90°	
2nd section articulation	180°	
3rd section articulation	260°	
4th section articulation	180°	
5th section articulation	270°	
1st section length	35'1"	(10.70m)
2nd section length	30'6"	(9.30m)
3rd section length	30'8"	(9.35m)
4th section length	30'8"	(9.35m)
5th section length	30'6"	(9.30m)

General Specs

Pipeline size (ID) metric ends with couplings	5"	(125mm)
Rotation	5.5"	(140mm)
End hose-length (heavy duty)	365°	
End hose-diameter	10'	(3m)
Outrigger spread L-R-front swing-out & telescope	9"	(125mm)
Outrigger spread L-R-rear swing-out	35'9"	(10.90m)
	32'10"	(10.00m)

Pump Specifications

52Z.16H

52Z.20H

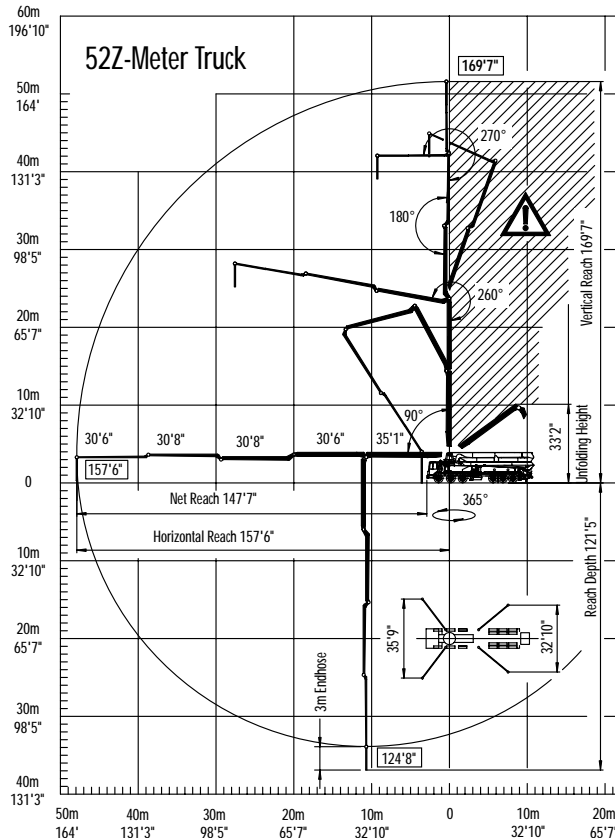
Output- rod side	210 yd ³ /hr (160m ³ /hr)	—
piston side	146 yd ³ /hr (112m ³ /hr)	260 yd ³ /hr (200m ³ /hr)
Pressure- rod side	1233 psi (85 bar)	—
piston side	1885 psi* (130 bar)*	1233 psi* (85 bar)*
Concrete cylinder diameter	9" (230mm)	11" (280mm)
Stroke length	83" (2100mm)	83" (2100mm)
Max strokes per minute- rod side	31	—
piston side	21	27
Volume control	0-Full	0-Full
Vibrator	Standard	Standard
Hard chromed concrete cylinders	Standard	Standard
Hydraulic system	Free Flow	Free Flow
Hydraulic system pressure	5075 psi (350 bar)	5075 psi (350 bar)
Differential cylinder diameter	5.5" (140mm)	5.5" (140mm)
Rod diameter	3.1" (80mm)	3.1" (80mm)
Maximum size aggregate	2.5" (63mm)	2.5" (63mm)
Water tank - outrigger leg	160 gal (600L)	160 gal (600L)

Maximum theoretical values listed.

* Applies to units mounted on Mack MR 688S

• Standard delivery line system rated at max line pressure of 1233 psi (85 bar)

Right to make technical amendments reserved.



End hose not to be operated in caution area.



Putzmeister America
1733 90th Street
Sturtevant
Wisconsin 53177 USA

Telephone (262) 886-3200
(800) 884-7210
Facsimile (262) 884-6338
www.putzmeister.com